



GENERAL HEALTH & SAFETY MEASURES



We are committed to providing you with a safe environment in accordance with all the health & safety guidelines set out by the local authorities. The event will be delivered with strict standards of health & safety precautionary measures including social distancing, contactless transactions and hygiene protocols at all times.

We've proven the highest Health & Safety protocols

In our most recent event, Gulfood 21 – 25 February 2021 we marked the most successful return for food businesses worldwide as the only live, in-person food & beverage sourcing event of the year.

Business was thriving across the show floor as exhibitors from 85 countries met up with buyers and attendees from 156 countries to kick-start 2021 with major orders, all, in the safest face-to-face business space.

98% of attendees felt Gulfood to be a 'safe and very safe event'

99% found the Safety Measures to be 'excellent' and 'adequate'

In December 2020, GITEX Technology Week, the only global live and in-person technology event took place and **96% of attendees recorded the event as safe and very safe to conduct business.**

The National Newspaper, ran a full page feature on the health and safety measures which were undertaken for the event in its newspaper dated the 7th December 2020

[Click here to view the full page feature in The National Newspaper on their review of DWTC's efforts >](#)



Coronavirus: how Dubai managed to pull off a safe and successful in-person Gitex

► More than 1,000 social distancing stickers, disposable microphone covers and 809 sanitisers were placed in the event centre

YOUR HEALTH AND SAFETY IS OUR TOP PRIORITY

- Dubai was voted the safest city in the world to attend an exhibition
- DWTC venue is certified with the prestigious Bureau Veritas SafeGuard Label

[Click here to view a video on the safety measures in place >](#)



SAFEST FACE-TO-FACE BUSINESS ENVIRONMENT, PROVEN TO YOU WITH GULFOOD 2021

In February, we welcomed attendees from 156 countries safely to kick-start 2021 at Gulfood, the only live in person food & beverage sourcing event of the year.

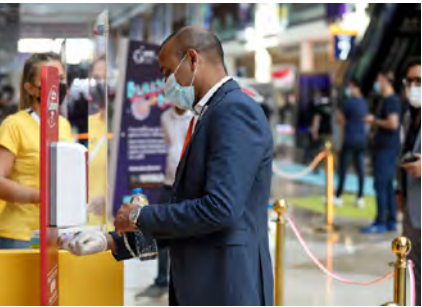
HERE'S A PICTURE GALLERY OF THE EVENT



SAFEST FACE-TO-FACE BUSINESS ENVIRONMENT, PROVEN TO YOU WITH GITEX 2020

In December, we welcomed attendees from 110 countries safely at 2020's only live in-person global technology event. Dubai World Trade Centre set a new safety benchmark for live exhibitions around the world.

HERE'S A PICTURE GALLERY OF THE EVENT



GENERAL HEALTH & SAFETY MEASURES



Due to new health and safety protocols, registration/tickets are only sold online at www.worldartdubai.com and there will be no registration onsite. [<REGISTER NOW>](#)



Once registered, you will receive a QR code via email and sms. Present this QR code onsite to collect your wristband



Wearing of masks is mandatory. A penalty of AED 3000 fine may be levied by the government authorities for non-compliance.



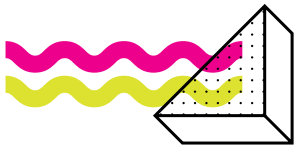
Social distancing and directional floor markings are to be respected at all times



Exhibition stand and feature areas maximum capacity and the minimum 2m social distancing guideline to be respected at all times



Clear signage of maximum capacity allowed at any one time will be displayed on the front of the stand. If a stand has a meeting room - maximum capacity will be displayed also



GENERAL HEALTH & SAFETY MEASURES



Aisles shall be a minimum of 2.5 metres width one way and 4 metres for 2-way traffic



Real time monitoring of crowd density and venue capacity



Exhibitors will sanitise high touch points/ areas within their exhibition stand frequently



Exhibitors will have sanitisers readily available on the stand at all times



All products and furniture used for product launches, if any, will be sanitised after every use. Gloves to be readily available if required



Sanitisers are readily available at multiple locations



GENERAL HEALTH & SAFETY MEASURES



Health & Safety Wardens will strictly enforce all policies. A penalty of AED 3,000 may be levied by government authorities for non-compliance



Entertainment is **NOT PERMITTED** on the exhibitions stands



All product demos and activations within a stand must observe a 2 metre social distance. The viewing area will be on the stand and will also incorporate social distancing of 2 metres



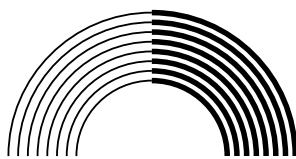
Avoid shaking hands and exchanging business cards



Food and beverages to be consumed in dedicated F&B areas where masks may be removed when seated.



Buffet permitted if served by waiting staff. Individually packaged food and beverage items available.



GENERAL HEALTH & SAFETY MEASURES



Conference chairs are protected with an antimicrobial shield and are sanitised regularly



Conference chairs are set 2 metres apart from each other at the conference



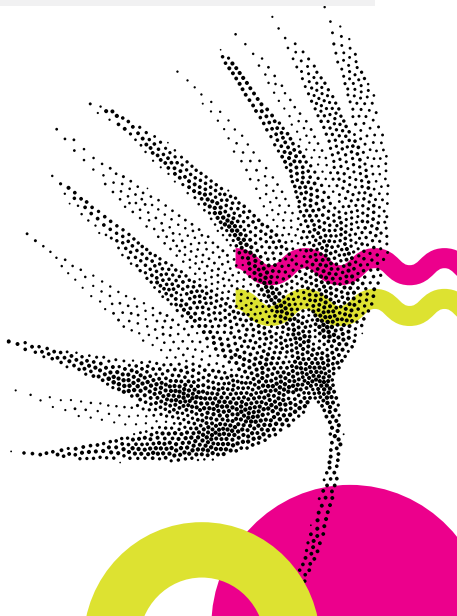
Air change rate in the halls is 8 times per hour. Air extraction in the halls is pre-scheduled and all shutter doors will be kept open both before and after the event to assist with air circulation.



PCR Testing Clinic available onsite, located at the Marketing Suite (opposite Hall 3)



Isolation rooms are set up at the venue for suspected cases.



IMPORTANT NOTICE

If you have a fever, cough, shortness of breath, are feeling unwell or suspect you have symptoms of COVID-19, please seek medical attention and do not attend the event.

For any queries on health and safety measures please contact Irene Hayes on Irene.Hayes@dwtc.com